

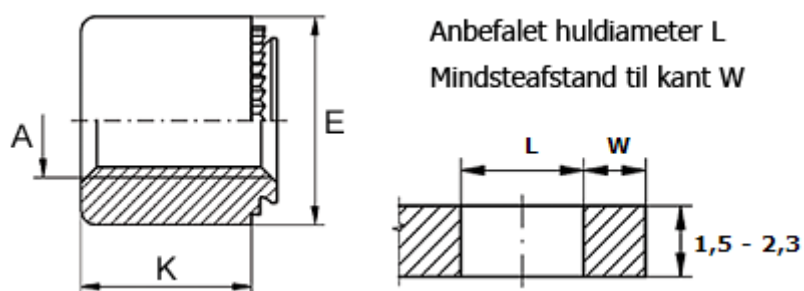
Data Sheet



Article number: 12507800150100

Description: KLEE-coil 507 800 150.100
M5 Hardened, zinc-pl. & chr. yellow

Measures



Female thread A	= M5
Height K	= 7
Min distance to edge	= 4.0
Outer diameter E	= 9
Plate thickness	= 1.1 to 1.4
Recommended bore diameter +0.05	= 6.00